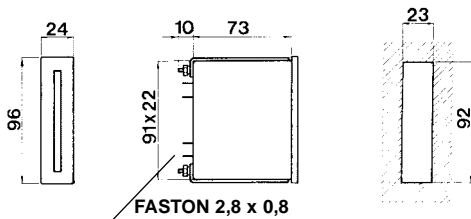


model **1B94...B 96x24**

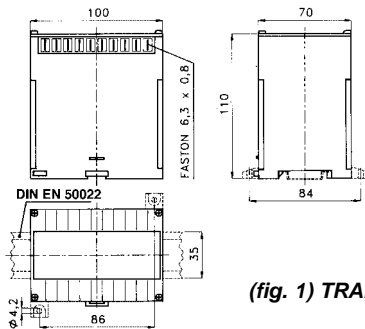
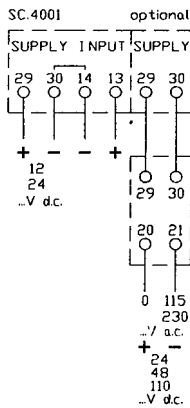
**BAR-GRAPH METER**

**Technical data**

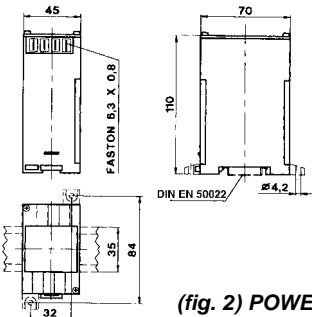
accuracy 1%  
 resolution 3,3%  
 response time <500m sec.  
 bar-graph 30 led  
 scale length 75 mm  
 continous overload 2 In - 1,2 Vn  
 istantaneous overload 10 In - 2 Vn  
 operating temperature -10 +50°C  
 storage temperature -30 +70°C  
 connection by faston 2,8x0,8  
 common negative



common negative



(fig. 1) TRANSDUCER



(fig. 2) POWER SUPPLY UNIT

Measurements (f.sc. values)	Input impedance	Price code
<b>Direct current</b> 50µA ÷ 20mA (4 ÷ 20mA) 50mA ÷ 5A (1 ÷ 10.000 A) 60 mV 1V ÷ 500V	20kΩ ÷ 50Ω (50Ω) 20Ω ÷ 0,02Ω 1kΩ 1,5kΩ ÷ 750kΩ	<b>1B94M-----B</b>
<b>Alternating current</b> 0,5 ÷ 5A* (1 ÷ 10.000 A) 5A* 1 ÷ 500V	0,2Ω ÷ 0,02Ω 0,02Ω 1,5kΩ ÷ 750kΩ	<b>1B94E-----B</b>
Frequencymeters (1) Single ph. Watt & VAR meters (1) Three-ph. Watt & VAR meters (1) RPM measurements, Vac-Vdc (1) RPM measurements from sensor (1) Resistance measurements (1) Temperature meas. (1) True RMS measurements (1)	Depending on the output characteristics of the transducer.	on request

(5A)\* without continous overload

Overrange indication with bar-graph flashing  
 Scale black, with yellow division and numbers (standard version)  
 Standard version: vertical.  
 (1) Equipped with separate transducer see fig. 1.

**Power supply:** 12 and 24V d.c., not insulated  
**On request:** 24 - 48 - 115 - 230V A.C. ±10% (2VA) 24 - 48 - 110 - 220V D.C. -10 +20% (2W) with external power supply unit (fig. 2).

**Ordering information**

- code
- input
- display
- power supply

# BAR-GRAPH METER

## Technical data

accuracy	1%
resolution	2%
response time	<500m sec.
bar-graph	1x50 o/or 2x50 (led)
scale lenght	125 mm
continous overload	2 In - 1,2 Vn
instantaneous overload	10 In - 2 Vn 1 sec.
insulat. between inputs and power supply	2kV - 1'50 Hz
inputs insulation	1kV - 1'50 Hz
operating temperature	-10 +50°C
storage temperature	-30 +70°C
connection by	faston 6,3x0,8

Measurements (f.sc. values)	Input impedance	Price code	
		1 bar-graph	2 bars-graph
<b>Direct current</b> 50µA ÷ 20mA (4 ÷ 20mA) 50mA ÷ 5A (1 ÷ 10.000 A) 60 mV 1V ÷ 500V	20kΩ ÷ 50Ω (50Ω) 20Ω ÷ 0,02Ω 1kΩ 1,5kΩ ÷ 750kΩ	1B18M-----7	1B18M-----8
<b>Alternating current</b> 0,5 ÷ 5A* (1 ÷ 10.000 A) 5A* 1 ÷ 500V	0,2Ω ÷ 0,02Ω 0,02Ω 1K 5kΩ ÷ 750kΩ	1B18E-----7	1B18E-----8
Frequencymeters (1) Single ph. Watt & VAR meters (1) Three-ph. Watt & VAR meters (1) RPM measurements, Vac-Vdc (1) RPM measurements from sensor (1) Resistance measurements (1) Temperature meas. (1) True RMS measurements (1)	Depending on the output characteristics of the transducer.	on request	on request

(5A)\* without continous overload

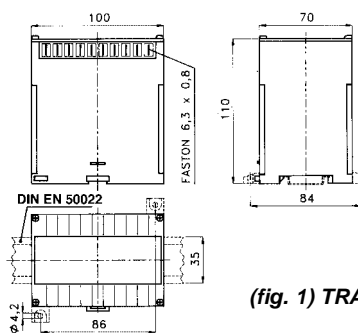
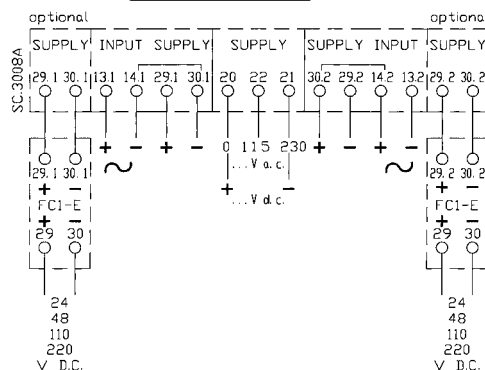
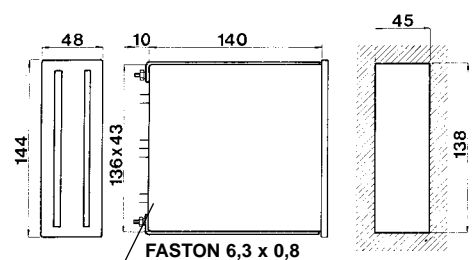
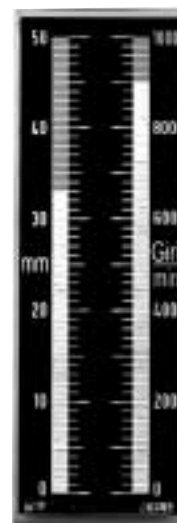
Overrange indication with bar-graph flashing  
 Scale black, with yellow division and numbers (standard version)  
 Standard version: vertical.  
 (1) Equipped with separate transducer see fig. 1.

**Power supply:** 115 and 230V a.c. ±0% (3VA)  
**On request:** 24V A.C. ±10% (3VA) 24 - 48 - 110 - 220V D.C. -10 +20% (3W)  
 One power supply for each bar is required (d.c. only) fig. 2.

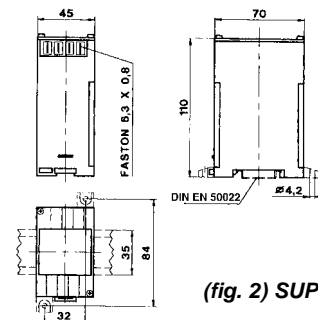
### Ordering information

- code
- input
- display
- power supply
- type of measurement

model 1B18...7/...8 144x48



(fig. 1) TRANSDUCER



(fig. 2) SUPPLY UNIT